

Stowupland High School

Always Striving for Success



Key Stage 4 Options



2026 - 2028

Glossary

Accreditation

When a course, or part of a course, is given credit or certification by an examining body.

GCSE

General Certificate of Secondary Education: a system of examination, with subjects using a scale of 1—9, with 9 being the highest grade.

Key Stage 4 (KS4)

This is the National Curriculum term for work usually completed in Years 10 and 11, although some of our KS4 courses have commenced in Year 9.

Levels of tiered entry

In a small number of subjects (Maths and Science for example) the examination is split into levels of ability with different papers for each level, and different grades awarded to each level.

Applied Courses

Btec or Tec award courses that may have an element of assessed coursework involved.

CHOOSING OPTIONS

What is this booklet for?

This booklet contains essential information about the Key Stage 4 Curriculum. There are some subjects which all students must take and these are the compulsory subjects of the National Curriculum. However, there is still the opportunity for students to make choices with regard to some of the courses they will study. This booklet is part of a programme of support to help with these significant decisions.

When making choices for Key Stage 4, it is important to bear in mind that students will be required to remain in education or training until the end of the academic year during which they become 18 years old. This may involve following a full time course at school or college, completing an apprenticeship, getting a job with accredited training or undertaking voluntary work with training. It is important to think not just about the next two years, but also to think about progression – what do you, as a Year 9 student, want to do after Year 11?

Which subjects must I study?

Certain Key Stage 4 subjects are studied by all students as required by the National Curriculum and these are referred to as the core subjects.

Core Subject	Current number of sessions per fortnight	Possible qualifications	
English	Minimum of 8	2 GCSEs	58% Curriculum Time
Mathematics	Minimum of 8	1 GCSE	
Science	9	3 GCSEs for some students 2 GCSEs for most students	
Religion Philosophy & Ethics	Taught through assemblies, PSHE and lesson time		
PE	3		
PSHE	1		

What are the subject choices?

As well as studying the core subjects, all students will take four optional courses. These optional subjects enable the curriculum to be personalised in response to a students individual interests or needs.

Do I have a totally free choice of options?

When you choose your GCSE options, this is the first time you have been able to personally steer the direction of your academic journey. This is an exciting opportunity, but it is also a time for careful thought. The choices you make now can influence the pathways available to you in the future, so it's important to take time to reflect and make informed decisions.

Although you are not required to take a language or a humanities subject, we strongly advise considering them if you have an aptitude for these areas. Subjects such as languages, history, and geography are often highly valued by colleges and universities and can give you more flexibility when choosing courses later on, especially if you decide to follow an academic pathway. Studying a broad range of subjects helps to keep your options open and avoids limiting your choices too early.

We have a very aspirational culture at our school and we understand and value the importance of a broad and balanced education. This breadth of study supports the development of key skills such as communication, critical thinking, and problem-solving, which are valuable across many careers and further education routes.

Ultimately, the most important thing is that you choose subjects you are likely to do well in and that you believe you will enjoy studying over the next two years. Enjoyment, commitment, and success often go hand in hand. Speak to your teachers and family, reflect on your strengths, and choose subjects that will support both your ambitions and your wellbeing.

A Guide to Decision Making

Selecting which subjects you hope to study at Key Stage 4 is an exciting time. This will be one of the first opportunities to have a big say in what you will be studying at school. “With great power, comes great responsibility”. It’s important that you appreciate the size of the commitment you are making and the possible impact on your future direction.

Who should help me make my choices?

- your parents/carers ... who know you best as a person
- your tutor ... who knows you and your strengths in school
- subject teachers ... who can tell you about the individual courses
- Careers advisor ... who can tell you about the subjects needed to pursue particular careers eg: medicine, architecture.

How should I make my choices?

It is important to consider the breadth and balance of the options that you pick. Your future career / education plans may change and it is important to acquire a range of skills.

There are three broad curriculum areas offering courses. These are:

- Humanities
- Expressive Arts, PE and Health Studies
- Technology, ICT and Computing

Before you choose courses, think about your strengths and weaknesses and your preferred style of learning. Some students like hands-on practical work and like courses that offer specific work-related elements. Others like to be able to undertake major coursework projects, whilst some prefer examinations.

What is a good reason to choose a course?

You should consider the breadth and balance of your options as much as possible to ensure you are well prepared for whatever you decide to do in the future. Do not choose a particular course just because you get on well with the teacher or because a friend chooses it.

You should base your choices on:

- The subjects you are making good progress in – this will lead to better motivation and your best final results
- The subjects which interest you, which you enjoy and which you want to study for two years
- The subjects which you may want to study at College or will help you with your future career (if you already have some idea of what this might be). You have researched the subject thoroughly and believe it offers you the best chance of success.

Will I get my first four choices?

Once the options deadline has passed, we construct a timetable that meets as many student choices as possible. We do our best to give you the first four choices in your list but, it is not always possible to create a timetable that fits every combination of the preferred four choices. It is also possible that a particular course may not run because too few students have expressed an interest in taking it. In these situations, we may use your fifth and sixth choices so it is essential that when you complete the options choice form that all six subjects are ones that you would be happy to study for two years.

What is the process for making option choices?

Date	Event
Friday 30th January	Options Booklets distributed
Thursday 5th February	Options evening for students and parents
W/C Monday 9th February	Student interviews available by appointment
Friday 27th February	Deadline for completing the options choices form

What do I do now?

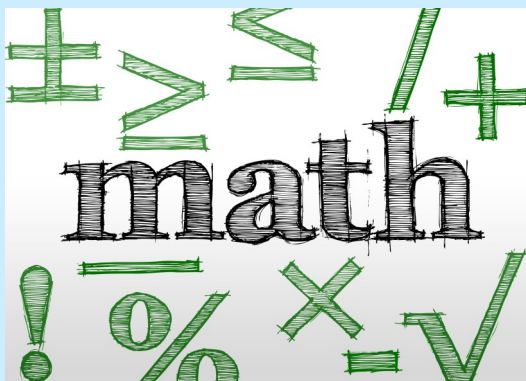
- Read this information booklet carefully
- Talk about your possible choices with your parents, teachers and tutor and anyone else who can advise you
- Begin to think about your possible choices and put them in **order of priority**. Remember you will **choose six courses but will only study four of them**. In the great majority of cases this will be preferences one to four in your list, but you may be allocated choices five or six in the final timetable
- Attend **Options Evening on Thursday 5th February 2026** with your parents or carers
- Request an additional interview by contacting the school via telephone or emailing options@stowuplandhighschool.co.uk, if you are still uncertain or need further guidance
- Ask your subject teachers for more information on the courses.
- Ask your parent or carer to sign your choices form
- Complete the form at the back of this booklet and return to your form tutor by **Friday 27th February 2026**. Handing in your options form late will mean you have less chance of being allocated your preferred options

On the following pages you will find information about all the courses of study. This will assist you in making your option choices.

The options form can be found on page 33.

Core Subjects

Subject	Page Number
English Language	9
English Literature	10
Mathematics	11
Science	12
Core Religion Philosophy & Ethics	13
Core Physical Education	13
Core PSHE	13



What Will I Learn?

Throughout the course you will be learning to:

- Read and respond to a range of high-quality, challenging texts from the 19th, 20th and 21st centuries covering a range of genres and forms
- Express ideas clearly and coherently in writing, adapting your style to meet the needs of different purposes and audiences
- Use language effectively and imaginatively to engage an audience



How Will I Be Assessed?

By two final written examinations at the end of the GCSE course.

Paper 1: 20th Century Literature Reading Study and Creative Prose Writing - 1 hour 45 minutes (40%)

Paper 2: 19th and 21st Century Non-Fiction Reading Study and Transactional / Persuasive Writing - 2 hours (60%)

What Career Could This Course Lead To?

A good pass in GCSE English Language is considered a vital qualification for almost all further and higher education pathways and future careers. The ability to understand and analyse information in written texts and to express one's own ideas in cogent and accurate written English is a prerequisite of all further learning.

Careers such as; advertising, journalism and publishing all require an English GCSE.

Which Qualification Will I Receive?

Eduqas GCSE English Language

What Will I Learn?

You will be able to read a range of classic literature fluently and with understanding, including:

- A play by Shakespeare
- A 19th century novel
- A selection of British poetry written since 1789
- Critically regarded British prose fiction or drama written from 1914 onwards
- Previously 'unseen' poetry texts

and you will also be able to respond to texts critically and analytically.

How Will I Be Assessed?

By two final written examinations at the end of the GCSE course.

Paper 1: Shakespeare and Poetry - 2 hours (40%)

- a Shakespeare Play
- an Anthology of poetry from 1789 to the present day

Paper 2: Post 1914 Drama or Prose, 19th Century Prose and Unseen Poetry - 2 hours 30 minutes (60%)



What Career Could This Course Lead To?

English Literature is a very well respected, academic GCSE. The skills of analysis, evaluation of writers' choices of language and form and the ability to consider and debate ideas and issues, are fundamental to many further education and career pathways.

Which Qualification Will I Receive?

Eduqas GCSE English Literature

What Will I Learn?

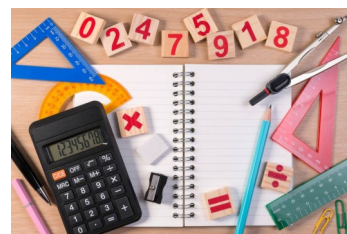
You are already studying the reformed GCSE in Maths and you will receive a grade numbered 9—1 (high to low). There is a greater emphasis on higher level Maths and the subject team will support you to be successful in this challenging subject.

Topics you will study are:

Domain	Weighting of marks	
	Foundation tier	Higher tier
Number	25%	15%
Algebra	20%	30%
Ratio, proportion and rates of change	25%	20%
Geometry and measures	15%	20%
Probability	15%	15%
Statistics		

Equipment

Every student will need a scientific calculator and a Maths set which must be brought to every Maths lesson. We recommend either the Aurora AX-595TV as it is very user friendly, or for anyone studying higher tier Maths, the Casio 991 CW.



How Will I Be Assessed?

To achieve your GCSE in Mathematics, you will sit **three formal exams** at the end of **Year 11** to determine your final grade. Each exam lasts **1 hour 30 minutes** and carries equal weight toward your overall result.

Depending on your current level and progress, you will sit either the **Foundation tier** or the **Higher tier**. You will take all three papers at that specific tier:

Exam Paper	Duration	
Paper 1	90 Minutes	Non-Calculator
Paper 2	90 Minutes	Calculator
Paper 3	90 Minutes	Calculator

What Career Could This Course Lead To?

Although every career uses Maths in some respect, some possible Maths-specific careers could be: academia, accountancy, actuarial, aircraft design, banking, brokerage, crime analysis, computer game design, financial analysis, fusion research, Home Secretary (one of the UK's recent interior ministers was a Mathematics with Economics graduate!), IT, logistics, management consultancy, marketing, medical research, merchant banking, meteorology, oceanography, oil industry, security service, pharmaceuticals, simulation, statistician, systems analysis, tax, teaching, transport planner, underwriter ...

... so not just being a Maths Teacher!

Which Qualification Will I Receive?

Edexcel GCSE Maths

What Will I Learn?

Year 9 students started their GCSE Science courses at the beginning of the year. You are currently carrying out the first Biology, Chemistry and Physics modules so that you can experience what GCSE is all about.

Combined Science: 2 Science GCSEs

In this pathway students will complete both Science modules by the end of Year 11. At the end of Year 11 you will have 2 GCSEs in Science.

Topic 1: Key concepts in Biology; **Topic 2:** Cells and control; **Topic 3:** Genetics; **Topic 4:** Natural selection and genetic modification; **Topic 5:** Health, disease and the development of medicines; **Topic 6:** Plant structures and their functions; **Topic 7:** Animal coordination, control and homeostasis; **Topic 8:** Exchange and transport in animals; **Topic 9:** Ecosystems and material cycle.

Topic 1: Key concepts in Chemistry; **Topic 2:** States of matter and mixtures; **Topic 3:** Chemical changes; **Topic 4:** Extracting metals and equilibria; **Topic 6:** Groups in the periodic table; **Topic 7:** Rates of reaction and energy changes; **Topic 8:** Fuels and Earth Science.

Topic 1: Key concepts of Physics; **Topic 2:** Motion & Forces; **Topic 3:** Conservation of energy; **Topic 4:** Waves; **Topic 5:** Light and the electromagnetic spectrum; **Topic 6:** Radioactivity; **Topic 8:** Energy (Forces doing work); **Topic 9:** Forces & their effects; **Topic 10:** Electricity and circuits; **Topic 12:** Magnetism & the motor effect; **Topic 13:** Electromagnetic induction; **Topic 14:** Particle model; **Topic 15:** Forces & matter.

How Will I Be Assessed?

Two exams in Biology, two in Chemistry and two in Physics will take place at the end of Year 11. Each paper lasts for 1 hour 15 minutes and will include a mix of question styles, including multiple choice, short answer questions, calculation and extended open response questions.

Students will carry out Core Practicals throughout the course and these will be assessed via exam questions at the end of Year 11 in the written papers

In both pathways please note:

- Students must complete all of the assessments at the same level: Foundation tier is targeted at grades 1-5
- Higher tier is targeted at grades 4-9.

What Career Could This Course Lead To?

Both courses allow progression to A Level Science subjects provided two Grade 6s or above are obtained. However a grade 4 will allow access to the level 3 applied science course. These courses are required if you wish to study any Science subjects Post 16 and are also useful for PE, Food Technology and Geography A Levels. Science can lead to careers in Medicine, Nursing, Computing, Lab Technician, Research and many other fields.

Which Qualifications Will I Receive?

A: GCSEs in Biology, Chemistry and Physics (Edexcel)

B: 2 GCSEs in Combined Science (Edexcel)

Core Religion Philosophy & Ethics

The programme of Religion Philosophy & Ethics will encourage students to be inspired, moved and challenged by following a broad, satisfying and worthwhile course of study. The topics we study stimulate thought and reflection and equip students to lead constructive lives in the modern world. Students will be able to:

- Adopt an enquiring, critical and reflective approach to the study of religious and moral issues
- Explore religions and beliefs, reflect on fundamental questions, engage with them intellectually and respond personally
- Reflect on, and develop, their values, opinions and attitudes in light of their learning
- Lessons focus on the nature of good and evil, crime and punishment, medical ethics and issues facing the planet.

Core Physical Education

The course is designed to encourage a healthy, active lifestyle by introducing students to a broad, varied and interesting range of physical activity. Students will develop skills that can be used after leaving school, fostering a lifelong interest in physical activity.

Selection of sports and activities:

Athletics | Handball | Basketball | Netball | Cricket | Fitness | Football | Rounders | Softball | Running | Weight Training | Badminton | Table Tennis |

The aims are as follows:

- To help the physical development of each student
- To encourage and develop an appreciation for fitness for life
- To promote social standards in hygiene
- To improve knowledge and skill in a range of physical activities
- To encourage co-operation and responsibility
- To provide opportunities for social development
- To provide experiences in order to cope with competition
- To encourage further participation in physical activity in leisure time and post school

There are also opportunities to follow additional courses within core PE such as Sports Leader Level 1 and Sport Education. We also provide access courses through our well established School Sports Partnership.

Core PSHE

All students in Years 7-13 follow a compulsory programme of Personal, Social and Health Education (PSHE) which includes the statutory elements of relationships and sex education at appropriate ages. At present, Years 7-9 are taught PSHE by a specialist teacher in timetable lessons whilst PSHE for Years 10-11 is delivered by form tutors in afternoon tutorial sessions.

The PSHE themes at KS4 include:

Year 10:

Transition to KS4—Mental Health—Healthy and Unhealthy Relationships—Personal Safety—First Aid—Finance and Money—Diversity and Extremism—Leadership Skills.

Year 11:

Options—Employment Skills—Relationships—Mental Health—Healthy Lifestyles—Grief and Loss—Pregnancy and Parenting - Future Goals—Revision Support.

Option Subjects

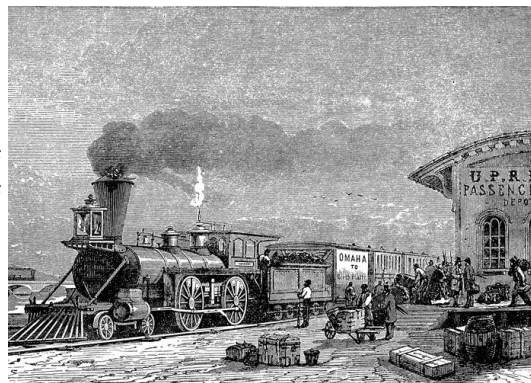
Subject	Page Number
History	15
Geography	16
Religious Studies	17
MFL French	18
Art and Design	19
Computer Science	20
Design Technology	21
Engineering	22
Hospitality & Catering	23
Health and Social Care	24
Physical Education	25
Triple Science (Chemistry/Physics/Biology)	26
Music Technology	27
Music	28
Drama	29

What Will I Learn?

Paper 1: Understanding the modern world

Section A: Period study - America 1840-1895

This study focuses on the development of America during a turbulent half century of change. It was a period of expansion and consolidation – the expansion to the west and consolidation of the American States.



Section B: Wider world depth study – Conflict & tension 1918-1939

This study focuses on the causes of the Second World War and seeks to show how and why conflict occurred and why it proved difficult to resolve the issues which caused it.

Paper 2: Shaping the nation

Section A: Thematic study – Britain: Health and the people

This study enables students to gain an understanding of how medicine and public health developed in Britain over a long period of time. It considers the causes, scale, nature and consequences of short and long term developments, their impact on British society and how they were related to the key features and characteristics of the periods during which they took place.

Section B: British in-depth study including the historic environment – Normans

This study allows students to examine in depth a specific historical period. The in-depth study will focus on the major events of the historical period considered from the economic, religious, political, social and cultural standpoint and arising controversies.

How Will I Be Assessed?

Papers 1 and 2 are both assessed through 2 hour written examinations taken at the end of Year 11.

What Career Could This Course Lead To?

History is an **academically respected** subject, as well as being **highly valued and respected by employers** who **demand History students** for the unique combination of skills they have gained during their studies. History students are well suited for a wide range of careers:

- Work where a knowledge of historical events is useful to understand current affairs, e.g. Journalism, Broadcasting, Civil & Diplomatic Service
- Work which can make good use of history skills such as research, e.g. Law, Publishing, Management, Librarianship
- Work which needs a knowledge of the past, or of historical objects, e.g. Architecture, Archive work, Heritage jobs, TV/radio programme research, Conservation/natural history.

Which Qualification Will I Receive?

AQA GCSE History

What Will I Learn?

'Geography students hold the key to world's problems.' (Michael Palin). Geography is a broad-based academic subject which links the arts and sciences. It is highly flexible in terms of what you can combine it with at GCSE and helps you to make sense of the world around you. It is hands on, relevant and fun. Geography is very practical, with opportunities to learn new skills such as modern computer-based mapping (called GIS), map skills, interpreting photographs, fieldwork skills, presentation and debating techniques. You will improve your literacy through your report writing and written work and make practical use of your numeracy skills when you interpret data and construct graphs. Fieldwork, or working outside the classroom, is a really important part of geography. Fieldwork will give you the opportunity to experience some of the things you have learnt in class and allow you to see things differently. GCSE Geography is relevant, diverse and a pathway to any ambitious learner.

Paper 1: Living with the physical environment: Students will start by investigating tectonic processes, earthquakes and volcanoes and how these are responded to differently, depending on a country's wealth. Students will investigate weather hazards including hurricanes, typhoons and cyclones before studying an extreme weather event that has affected the UK. Students examine climate change and the science behind it before examining how we exploit the tropical rainforest and hot desert. Students finish the year exploring coasts and rivers.

Paper 2: Challenges in the human environment: This unit explores the different levels of development and wealth across our world and the impact this is having on our ever-growing population. Students will focus on a city in the UK and overseas to explore how they have developed and continue to do so. Students will unpick the ways we measure a country's development and draw conclusions as to why the development gap exists. To finish this unit, students will study resource management on a local and global scale, which will involve conducting an in-depth study of either food, water or energy demand.

Paper 3: Geographical applications: Students will take part in two fieldwork enquiries, one exploring the Suffolk coastline and the other looking at regeneration of a local town/city. Students will also be tested on their critical thinking and problem solving in the paper.

How Will I Be Assessed?

Three examinations will take place at the end of the two years:

Paper 1: 1 hour 30 minutes (35% of GCSE)

Paper 2: 1 hour 30 minutes (35% of GCSE)

Paper 3: 1 hour 15 minutes (30% of GCSE)

What Career Could This Course Lead To?

Armed forces, aid worker, conservationist, agriculture, lawyer, cartographer, environmental consultant, travel agent, teacher, town planner, GIS officer, architect, meteorologist, engineer, surveyor, ministry of defence, United Nations, earth scientist, tour guide, lecturer, diplomat, banker and many more.

Which Qualification Will I Receive?

AQA GCSE Geography

What Will I Learn?

Component 1: The study of religions: beliefs, teachings & practices

Beliefs, teachings and practices of:

- Buddhism
- Christianity

Component 2: Thematic studies

Four religious, philosophical and ethical studies themes:

- Religion and life including creation, abortion, euthanasia, animal experimentation, and the environment.
- The existence of God and revelation including arguments for and against the existence of God, visions, miracles, and the validity of revelation.
- Religion, peace & conflict including war, violent protest and terrorism, weapons of mass destruction, and pacifism.
- Religion, crime and punishment including the aims of punishment, death penalty, and forgiveness.

You will study religious teachings, and religious, philosophical and ethical arguments, relating to these issues and their impact and influence in the modern world. You will gain awareness of contrasting perspectives in contemporary British society on all of these issues.



How Will I Be Assessed?

Components 1 and 2 are both assessed through 1 hour 45 minute written examinations taken at the end of Year 11.

What Career Could This Course Lead To?

Skills:

Empathy
Critical thinking
Debating
Communication
Reasoning / logic
Presentation
Problem solving
Tolerance
Considering others views

Some possible careers:

Medicine / Nursing
Lawyer / Barrister / Solicitor
Counsellor
Politician
Youth worker
Journalism / media
Armed forces / Police
Archaeology
Archivist
International work
Development of AI
Tourism

Which Qualification Will I Receive?

AQA GCSE Religious Studies

What Will I Learn?

You will have already been introduced to most topic areas that are covered in GCSE French. You will build on your prior learning covering areas such as: descriptions of self, family, school life, home life, technology, holidays, weather, healthy / unhealthy living, town, environment, shops, fashion, work and social issues. You will also study grammar, such as verbs, tenses and adjectives.



How Will I Be Assessed?

All students will be assessed through final examinations in Listening, Speaking, Reading and Writing at the end of Year 11.

Each skill will contribute 25% of the final GCSE grade.

Students will be entered at either Foundation or Higher Tier across all skill areas.

What Career Could This Course Lead To?

There are specialist language careers such as translation, teaching and interpreting, but languages can lead you into almost any sector:

- Telecommunications
- Travel and tourism
- Market research
- Media
- Car manufacturing
- Banking/finance
- IT
- Public services

After GCSE you could consider carrying languages on to A Level and beyond to degree level. Indeed there are some universities which look very favourably upon applications from students who have studied a language at least to GCSE level.

Which Qualification Will I Receive?

AQA GCSE in French

What Will I Learn?

The GCSE course offers the following:

- ◆ A structured course which teaches you different ways of making your own ideas come to life
- ◆ Active investigation and research into the work of artists, craftsmen and designers
- ◆ The opportunity to work in a wide range of media such as: painting, drawing, printmaking, photography and ceramics and textiles techniques such as felt work and batik.
- ◆ Encouragement to develop your own responses to themes and briefs based on your own experiences.

Students will be expected to develop their ICT skills through independent research and practical development of their own ideas.



Option

How Will I Be Assessed?

The exam board requires you to complete one extended unit of coursework that begins in Year 10 and continues into Year 11. The externally set assignment will be based on a theme set by the exam board and involves a piece of work carried out under exam conditions — the “Timed Examination”.

What Career Could This Course Lead To?

Any career in Art & Design including fine arts, photography, interior design, teaching, art therapy, gallery technician, printmaker, graphic design, illustrator, architecture, costume designer and fashion industry.



Which Qualifications Will I Receive?

Edexcel GCSE Art and Design (Fine Art)

What Will I Learn?

Studying Computer Science helps students gain the valuable digital skills that are essential for any job in today's technology driven world. Whilst working on their Python programming, they will also be developing their logical thinking, creativity and problem-solving skills which can be applied to many different subjects and careers outside Computer Science. The subject supports students to become confident and responsible at both using and creating technology, preparing them effectively for whatever field they choose to move into after they leave school.

Students will cover the following:

Computer Systems

- Systems Architecture
- Memory and Storage
- Computer networks, connections and protocols
- Network security
- System software

Computational thinking algorithms and programming

- Algorithms
- Programming fundamentals
- Producing robust programmes
- Boolean logic
- Programming languages and integrated development environments

How Will I Be Assessed?

Students should be aware that the course is **100% exam** and no longer contains any coursework elements. Although practical skills, such as programming, are developed, they will be assessed at the end of the course with 2 written exam papers.

Computer Systems (01): written paper—1 hour 30 minutes, 80 marks (no calculators allowed)

Computational thinking, algorithms and programming (02): written paper—1 hour 30 minutes, 80 marks (no calculators allowed).

What Career Could This Course Lead To?

Doctor or Healthcare Technologist: using computer systems, data analysis, and AI to improve diagnosis, treatment and patient care.

Financial Analyst: applying computing and data skills to analyse markets, manage risk and support investment decisions.

Game Designer: combining creativity with programming and problem-solving to create engaging interactive experiences.

Engineer: using coding, simulation and computational thinking to design, test and control machines and systems.

Web or App Developer: creating mobile applications or websites for businesses, organisations and individuals.

Scientist or Researcher: using computing to model experiments, analyse results and solve complex scientific problems.

Cybersecurity: protecting organisations and individuals by securing networks, systems and sensitive data.

Digital Forensics: using computing skills to investigate cybercrime and analyse digital evidence.

Which Qualifications Will I Receive?

OCR GCSE Computer Science

What Will I Learn?

Design Technology covers a wide range of skills and knowledge, focusing on analytical skills whilst researching, designing and prototyping products. For an inquisitive and focused student it will be very rewarding, offering varied tasks and lessons, developing your creativity and understanding of what users need and desire to live effectively and efficiently.

The course will cover a range of different Design technology skills, though for your GCSE project you will choose the materials that best suit your product choice.

How Will I Be Assessed?

Year 10:

You will explore a wide range of design theory and skills in preparation for your written exam and your coursework project. The key skill of a successful designer is to apply your knowledge and understanding of world issues to create innovative and effective solutions to common problems. It must be understood that practical work is only one small part of the subject, and most lessons will not involve 'making'.

You will begin your coursework project on 1st June, where you are required to thoroughly research a topic (you will be given 3 very broad topics from which to choose, such as 'Hobbies', 'The Environment' or 'School life') and generate a variety of ideas for a new product to solve a problem within that topic.

Year 11:

You will continue the coursework project, which is worth 50% of your final GCSE grade. Your grade will be determined by the detail and quality of your design folder, which must include thorough researching, lots of idea exploration, and skilful presentation, modelling and making of a small prototype. This project is no more work than any other subject, but does require you to be organised and proactive, being sure to make every lesson count. The pages you do in lesson will be assessed by the examiner.

At the end of Year 11 you will sit a theory paper worth 50% of your grade. This exam requires you to show knowledge of materials, processes, design-based mathematical calculations, and understand of various issues designers must consider.

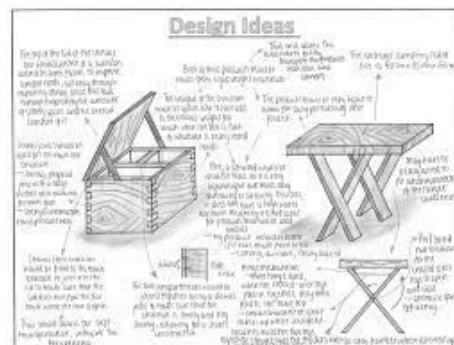
What Career Could This Course Lead To?

A GCSE in Design Technology can lead to a career in marketing, graphic design, publishing or architecture, but is also very relevant to fashion design, engineering, interior design and a wide range of other fields.

The analytical skills we develop are a key skill in any career and life in general.

Which Qualification Will I Receive?

AQA GCSE Design Technology 1-9



What Will I Learn?

The Engineering course is now a highly academic and theoretical course, with an emphasis on Design, Mathematics and Physics. With there no longer being any type of assessed practical exam (and only a fraction of marks being awarded for coursework practical) the vast majority of lesson teaching time will be focused on teaching the theory of Engineering and Design. This will include understanding, interpreting and generating technical drawings, material properties, designing to a client brief, CAD skills etc, and then some practical workshop skills. It is recommended that since the final exam paper is so biased towards mathematical calculations and scientific principles that pupils should be expecting at least a GCSE Level 5-6 in these subjects before considering taking the Engineering course.



How Will I Be Assessed?

Assessment is approximately 2/3 coursework based, with 1/3 assessed by a written exam with a theme set by the Exam Board, (WJEC). Coursework begins in Y10 and continues into Y11; the written exam will be at the end of Y11.

The course will be assessed in a variety of ways including written coursework, quality of design and communication skills and knowledge tests. The assessment will take place on a continuous basis from the start of the course, therefore you will need to be motivated and focused on the work at all times.

The coursework based work will include a design task where you will need to design a new product to a set brief as well as a task where you will need to interpret an engineering drawing/data tables and make a simple component.

What Career Could This Course Lead To?

This course will allow you to access a range of Engineering courses at college (mechanical engineering, civil engineering, aeronautical engineering) either full time or as part of an apprenticeship linked to employment, and could lead to vocational work in engineering and employable skills within the manual engineering sector.

Which Qualification Will I Receive?

WJEC Award in Engineering

What Will I Learn?

Throughout this course you will:

- Learn about Health and Social Care
- Develop skills, knowledge and understanding that will enable you to progress
- Understand aspects of personal development
- Develop a critical and analytical approach to problem solving

Topics will cover some of the following:

- R033 Supporting individuals through life events (Internal)
- R032 Principles of Care in HSC settings (External exam)
- Optional R034: Creative and therapeutic activities (Internal)
- or either R035: Health Promotion Campaigns (Internal)

You will be ideally suited to this course if you:

- Want to go on to work in health and social care related areas
- Are good with the young and elderly alike
- Can work independently on major pieces of work

How Will I Be Assessed?

To achieve the full qualification, you must complete a total of three units. Two units will be internally assessed and ONE unit will be an external examination.



What Career Could This Course Lead To?

Care Worker / Professional, Nursing, Nursery Nurse, Social Worker, Early Years Education, Paramedic, Teacher and many more . . .

Which Qualification Will I Receive?

OCR Level 1 or 2 Cambridge National in Health & Social Care

What Will I Learn?

The BTEC Tech Award in Sport consists of three units of work:

Component 1:

Preparing participants to take part in sport and physical activity (Internal assessment)

Component 2:

Taking part and improving other participants Sporting Performance (Internal assessment)

Component 3:

Developing fitness to improve other Participants Performance in Sport and Physical Activity (External assessment)



How Will I Be Assessed?

The externally assessed unit will be a written paper at the end of Year 11. This assessment is worth 40% and the written exam is 1 hour and 30 minutes.

The internally assessed units are assessed in school and externally verified by Edexcel.

What Career Could This Course Lead To?

PE Teacher, Sports Coach, Sports Recreation Manager, Fitness Instructor, Strength and Conditioning Officer, Physiotherapy, Sports Development Officer, Sports Games Organiser and many more . . .

Which Qualification Will I Receive?

Edexcel BTEC Level 1/Level 2 First Award in Sport

What Will I Learn?

Year 9 students started their GCSE Science courses at the beginning of the year. You are currently carrying out the first Biology, Chemistry and Physics modules so that you can experience what GCSE is all about.

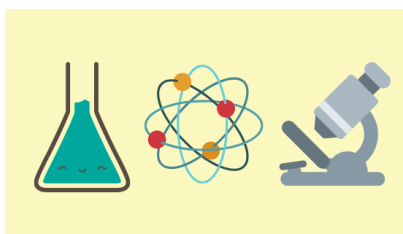
Three separate Science GCSEs: Biology, Chemistry and Physics

The three separate sciences will involve studying all three sciences in greater depth. At the end of Year 11 students will have 3 GCSEs in Biology, Chemistry and Physics.

Students choosing Triple Science as an option are taught additional lessons within each unit, beyond that of combined science.

We would expect students choosing Triple Science to be achieving 'good' or high end 'developing' in their termly assessments.

In addition to the Core Science curriculum, students study additional units in Chemistry, Physics and Biology.



How Will I Be Assessed?

Two exams in Biology, two in Chemistry and two in Physics will take place at the end of Year 11. Each paper is 1 hour and 45 minutes long and will include a mix of question styles including multiple choice, short answer questions, calculations and extended open response questions. The overarching concepts in Biology, Chemistry and Physics are examined in both papers for each subject.

Students will carry out Core Practicals throughout the course and these will be assessed via exam questions at the end of Year 11 in the written papers.

- Students must complete all the assessments at the same level:
Foundation tier is targeted at grades 1-5
Higher tier is targeted at grades 4-9

What Career Could This Course Lead To?

These courses allow progression to A Level Science subjects provided two Grade 6 or above are obtained. However, a grade 4 will allow access to Level 3 Applied Science courses. These courses are required if you wish to study Science subjects Post 16 and are also useful for PE, Food Technology and Geography A Levels. Science can lead to careers in Medicine, Nursing, Computing, Lab Technician, Research and many other fields.

Which Qualification Will I Receive?

GCSEs in Biology, Chemistry and Physics (Edexcel)

What Will I Learn?

This qualification has been developed to provide an engaging and stimulating introduction to the world of music through the use of Music Technology and is aimed at students who have a passion for creating music using digital technology. Throughout the course, you will study 3 units:

Component 1: Exploring Music Products and Styles

In this component, you will develop your understanding of different types of music products and the techniques used to create them. You will explore how musical elements, technology and other resources are used in the creation and production of music. Through practical activities, you will explore the key features of different styles of music and music theory and apply your knowledge and understanding to developing your own creative work using digital technology.

Component 2: Music Skills Development

As a producer, engineer or creator in the music industry, you need to continually develop your skills and techniques in order to be successful and secure a regular flow of gigs and commissions. In this component, you will participate in workshops and classes where you will develop technical, practical, personal and professional skills and specialise in the following areas: creating original music and music production. Throughout your development, you will review your progress and consider how to make improvements.

Component 3: Responding to a Music Brief

This component will allow you to work to your strengths and interests and apply the skills that you have learned throughout your course in a practical way. You will focus on a particular area of the music sector that excites and appeals to you and respond to a music brief as a music producer. You will begin by exploring the brief and investigating possible responses and ideas to meet the demands of the brief. Using relevant resources, skills and techniques you will then develop and refine musical material before presenting your final response. You will develop and present an original creation based on a piece from a given list and a style from a choice of four. You will then present this as an audio recording or a Digital Audio Workstation (DAW) project.

How Will I Be Assessed?

Components 1 and 2 are assessed through non-exam internal assessment. This is designed to demonstrate application of the conceptual knowledge underpinning the sector through realistic tasks and activities and promotes deep learning through ensuring the connection between knowledge and practice. Non-exam internal assessment is delivered through Pearson-set Assignments. These assignments are set by Pearson, marked by the centre and moderated by Pearson. Component 3, which provides the main synoptic assessment for the qualification. The external assessment takes the form of a set task taken under supervised conditions, which is then marked and a grade awarded by Pearson.

What Career Could This Course Lead To?

BTEC Music prepares learners to progress onto further musical study such as a level 3 BTEC course in Music or Music Technology, A-Level Music Technology, or other vocational qualifications at a further education establishment.

Which Qualification Will I Receive?

BTEC Level 2 Tech Award in Music.

What Will I Learn?

This qualification will provide a contemporary, accessible and creative approach to studying Music through three main elements – performing, composing and appraising. You will be encouraged to be creative and to broaden your musical horizons and understanding with Areas of Study that inspire and challenge. This qualification will enable you to explore performance and composition with a focus on your own instrument and genre choices. Through the various genres, styles and eras contained in the 5 Areas of Study, you will explore musical context, musical language, and performance and composition skills. This qualification is designed to appeal to, and cater for, a wide range of interests, instruments, personalities and directions. You will develop your skills as a **performer, composer and listener** through studying the following three components:

1: Integrated Portfolio

This component is designed to enable you to develop an understanding of performance and composition through exploration of your own instrument and styles and genres of your own choosing. You will develop your playing skills and abilities through regular practice in order to be able to perform a piece musically, accurately and with appropriate interpretation. Your chosen piece(s) should be of a standard commensurate with your level of ability. Within a composing context, you should demonstrate knowledge of composition techniques, use of musical elements and resources, including specific instrumental and technology techniques.

2: Practical Component

This component is designed to enable you to further develop your skills and understanding of performance and composition. For performance, the focus of the assessment is on the demands of performing within an ensemble. For composition, you are required to compose a piece of music in response to a brief set by OCR

3: Listening And Appraising

This component will assess your knowledge and understanding of the content of Area of Study 2: The Concerto Through Time, Area of Study 3: Rhythms of the World, Area of Study 4: Film Music and Area of Study 5: Conventions of Pop.

How Will I Be Assessed?

The OCR GCSE (9–1) in Music consists of two components (Integrated portfolio and Practical component) that are assessed by the centre and externally moderated by OCR, and one component (Listening and appraising) that is externally assessed.

1: Integrated Portfolio (30%) consists of one performance (15%) and one free choice composition (15%)

2: Practical Portfolio (30%) consists of an ensemble performance (15%) and a one composition to a brief set by the exam board (15%)

3: Listening and Appraising (40%)

There are 4 Assessment Objectives for which students are required to demonstrate their ability to:

AO1 - perform with technical control, expression and interpretation

AO2 - compose and develop musical ideas with technical control and coherence

AO3 - demonstrate and apply musical knowledge

AO4 - use appraising skills to make evaluative and critical judgements about music.

What Career Could This Course Lead To?

Learners who achieve this qualification could pursue a career in either of the following: Performer / musician, Music teacher, Composer / songwriter, Sound engineer / music producer, Film and game music composer, Music therapist, DJ / music technologist, Arts administrator, Journalist / critic, Event and stage manager.

Which Qualification Will I Receive?

You will receive the OCR GCSE (9-1) in Music.

What Will I Learn?

GCSE Drama provides a firm foundation for a wide variety of careers. The course develops your confidence, communication, creativity, presentational skills, self-discipline and sensitivity to others through active participation in group work.

The course does not necessarily require you to perform to an audience. You could opt to do lighting, sound, costume or set design instead!

How Will I Be Assessed?

Assessment is in three parts.

Component 1: Devising (40%)

Performance **OR** design work that is teacher assessed, accompanied by a written portfolio which will take place as coursework. This whole component will take place throughout Year 10.

Component 2: Performance from a text (20%)

Performance **OR** design work for two extracts from a play-text studied in class. Evening performance to a visiting examiner in Year 11.

Component 3: Written Examination (40%)

The written examination is split into two sections.

In **Section A**, you will answer questions on *An Inspector Calls*. This text is also studied for GCSE English Literature. You will write as an actor, director and designer to explain how your own concept of *An Inspector Calls* will

For **Section B** you will be required to write a Theatre evaluation based on a play, which we will see in March of Year 11. For this section, you can take a maximum of 500 words of notes into the Examination



What Career Could This Course Lead To?

Your learning will prepare you for further study of the subject at A Level or University. This may then lead to a job role in the performance and entertainment industry or various other careers which require team-work, self-confidence, effective communication, creative thinking, problem-solving and contact with the public.

Examples are: Media and Broadcasting, Youth Leadership, Producing, Teaching, Law, Stage Management, Public Relations, Advertising, Design Work, and many more!

Which Qualification Will I Receive?

Edexcel GCSE Drama

Resources and Enrichment Activities

During the course of Key Stage 4, we endeavour to provide enrichment opportunities across a range of subjects to enhance students' study and to enable them to gain the best possible grades. A table outlining these opportunities is given overleaf and we trust that this information is helpful.

The school will always ensure that trips, visits and revision materials are made as cost-effective as possible. We will, for example, ensure that the benefits of bulk-buying are passed onto students and many subject areas will write and publish their own revision guides.

The school operates the Oxlip Learning Partnership Charging and Remissions Policy. There is provision within this to support any student where the cost of a trip or visit may be prohibitive. This may involve one or several subject areas. Requests for such support can be made in absolute confidence to: Mrs N Wooldridge, Finance Manager.

Please note that due to particular funding streams received by the school, some students may automatically receive books and revision material free of charge.

English	<p>Although students will have access to copies of the three set texts they will study for English Literature, these will be kept in school. If your child would like to annotate their copies to aid revision, these need to be purchased individually at an approximate cost of £20—£25 for all three texts.</p> <p>Visits to see local drama productions of the plays studied may arise at a cost of approximately £25-35 each and revision guides are available from school for £15-18 for English Literature and £6 for English Language.</p>
Maths	<p>Scientific Calculator (the best model is either a Casio 991 CW or the Aurora AX-595TV. Maths set containing a ruler marked in centimetres and millimetres, a protractor (either 180 degrees or 360 degrees) and a mathematical compass for drawing circles (a range is available on Amazon).</p>
Science	<p>Revision guides are available at an approximate cost of £2.75 per book (4 books).</p> <p>There are annual visits to Laboratories and enriching events. Cost typically range from £5-£20.</p>
History	<p>A site visit will be planned to support the British depth study historic environment element of the course – the cost is likely to be £10-£15.</p> <p>A revision study visit will also be planned to support the Britain: Health & the people element of the course – the cost is likely to be £30.</p> <p>Unfortunately a visit to the American West is not currently envisaged!</p>
Geography	<p>The AQA Geography course requires students to undertake two sessions of fieldwork activities and investigations. To accommodate this requirement we intend to take students off-site for these two sessions— currently studying coastal processes and urban regeneration in Felixstowe— cost approximately £10.</p> <p>A revision guide will be available at approximately under £5.</p>
MFL	<p>We hope to arrange a trip to France at an estimated cost of around £530.</p>
Art	<p>Students will need two sketchbooks across the GCSE course, at a cost or around £3 and an optional A2 sized folder that costs £2. Other materials can be ordered, but are not essential. There is also a visit in Year 11 to a local gallery that costs around £10.</p>
Design Technology	<p>Although basic materials are provided for the course, students will be expected to contribute to any additional materials for the major project undertaken in Year 11. This is usually between £10—£15..</p>
Hospitality & Catering	<p>Students will need to provide ingredients for practical sessions. This is an expectation of the course.</p>
Health & Social Care	<p>Revision Guide Work Book and Revision Notes— cost £11 per book.</p>
BTEC Sport	<p>Exam Practice Workbook and Revision Guide— cost £3.75 per book.</p>
Music	<p>If the opportunity arises for a trip to a concert or music venue this would cost around £40—£60. In addition to this, instrument lessons are £10 per week, billed half termly.</p>
Drama	<p>One trip to the West End—approximately £40. This will inform students’ Theatre review for C3 exam. This will be in January/February of Year 11. Revisions guides will be available at a cost of £3.55, design candidates may require extra resources.</p>

Preference Form



This form will be used to allocate your options for 2026-2028

Name:		Form Class:	
-------	--	-------------	--

Please indicate in the table below which options you wish to study in Years 10 and 11, in preference order, with 1 being the option you most want to follow.

Option Preference	Subject (please circle selected option, or write subject)
1	
2	
3	
4	
5 (reserve)	
6 (reserve)	

Questions or Concerns

In the box below, please indicate any specific information you wish to be taken into consideration when allocating options or any additional information you require.

I confirm the above options choices are my preferred subjects, and that should one or more subjects become unavailable, alternatives will be discussed with me and my parents/carers.

Student Signature:		Date:		Tutor Initials:	
Parent Signature:		Date:		Date Received:	

Please return this Form to your tutor by Friday 27th February

Reverse side of the Options Form

Please return this form by **Friday 27th February**



Dates and Deadlines Reminder

Date	Event
Friday 30th January	Options Booklets distributed
Thursday 5th February	Options Evening for students and parents
W/C Monday 9th February	Student interviews available by appointment
Friday 27th February	Deadline for completing the options choices form

Stowupland High School

Church Road | Stowupland | Stowmarket | Suffolk | IP14 4BQ

01449 674827

Year 9@stowuplandhighschool.co.uk

www.stowuplandhighschool.co.uk