

# Stowupland High School Bulletin

Friday 17th October 2025



We have continued to see significant improvements in attendance this year. We are above national attendance and well above where we were this term last year. **THANK YOU** parents and carers in supporting us to ensure your child attends every day. This is critical for their learning and future prospects. Only by attending can students learn more, understand more and be able to do more in the future.

This week we issued Progress Checks for each Year 11 student on Arbor. Parents can see their child's current working grade, predicted grade, attitude to learning and most recent mock result. These provide a clear guide to where they are now and where they might be in Summer 2026. However, I would be grateful if parents can pass on the message 'ABILITY IS NOT FIXED'. In other words, they should use every lesson, homework, project or piece of work as an opportunity to improve their knowledge and not limit themselves to achieving the grades on the latest progress check!

Congratulations to our Stowuptastic Under 15 girls' football team, who competed in the Futsal county qualifiers on 9th October. They won both of their matches comfortably against Stowmarket HS and Thomas Mills, qualifying with ease for the county finals. Well done Aimee B, Emily C, Maddisyn K, Freya L-J, Charlotte P, Lola T, Ruby W and Lois B. A massive thank you to the equally Stowuptastic Mr Terry for his superb coaching.

**Mr Walker, Principal**

## Attendance letters

All parents and carers will receive a letter from the school informing them of their child's attendance for the first half term. These letters will highlight if attendance is categorised as good, a concern or risk of underachievement. These letters are intended to be open and transparent about student attendance and the implications of their current attendance be it positive or negative. They are not intended to challenge the parents/cares or pass judgement but maintain communication challenges to enable support.

## Trousers up

There is a growing trend within the school of males wearing trousers very low, often referred to as 'sagging'. The school is not in a position to and is not trying to change the culture of fashion outside of the school. However, it is important that all students arrive at school dressed appropriately in the correct uniform and are presentable. Students should not be exposing any part of their body that should otherwise be covered by suitable clothing. Students will often wear additional shorts or tracksuit bottoms under their trousers. This does not prevent it from being inappropriate and students will be challenged. Failure to cooperate will result in demerits for not following instructions and possible IER for failure to respect the uniform rules by wearing uniform incorrectly. Your support in this matter will be greatly appreciated.

## Halloween & Children's Safety - Child Accident Prevention Trust

It's October which every teacher knows means two things; half term and Halloween. Halloween does raise concerns to school leaders, parents as well as the general public. Largely this has been due to anti-social behaviour, social disorder linked to trick or treating and house gatherings. Whilst it is everyone's right to enjoy Halloween festivities, older students (Y10-11) present a different dynamic when knocking on doors. They are often taller as their bodies are almost fully grown. Often they do not place as much effort into costume design and just wear their social clothes. When in large groups this can be perceived as intimidating for residents and younger children participating in events. We would advise that older teenagers allow the younger children to enjoy the festivities and find an alternative way to socialise. Other dangers include unsafe costume design, and the low visibility of participants.

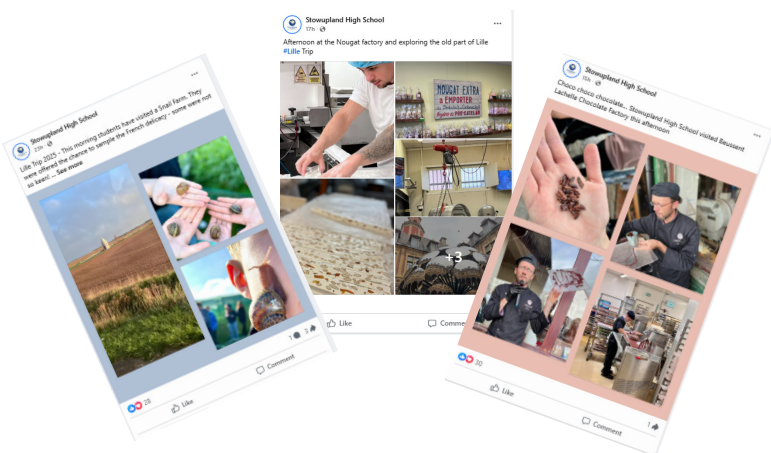
The Child Accident Prevention Trust have highlighted some concerns that all parent/carers should be aware of. Please click on the link for more information - [HALLOWEEN SAFETY](#)

## Lille Residential Trip

At the time of writing, staff and students are on their way back to school after a wonderful five-day trip to Lille. **WOW**, what an action-packed week they have had - visiting a boulangerie for croissant-making, a trip to Wazemmes Market, a tour and demonstration at "La Maison de Nougat", the art and culture of Palais des Beaux Arts, a stadium tour of Stade Lens Bollaert-Delelis, Ten Pin Bowling, a visit to Beussent Lachelle Chocolate Factory, a trip to the Sea Life Centre and a visit to the Snail Farm - with tastings for those brave enough!

We can't wait to hear their stories when they return to school next week and we hope you have enjoyed the photo updates on our Facebook page.

If you don't follow us already, please visit our Facebook page [HERE](#), or scan the QR code.



## Year 11 Revision Guides

Just a reminder that Year 11 Revision Guides can now be purchased via your Parentmail Shop. Please note; by ordering through school, some of these guides are over 50% cheaper than ordering online. The deadline for orders is Sunday 2nd November 2025. If you have any queries, please contact Mrs Wooldridge by email; [accounts@stowuplandhighschool.co.uk](mailto:accounts@stowuplandhighschool.co.uk)

## Flu Vaccinations

Suffolk Immunisation Team visited school on Tuesday to offer the Flu Vaccine to Year 7 & 8 students. They will return on Tuesday 21st October for Years 9, 10 & 11. Please see the email previously sent to parents and carers for further information.



## Thursday 23rd October Staff and Student Bake Off

Prefects will be visiting tutor groups with sign up sheets and posters next week. Cakes will need to be delivered by students to T1 on Thursday morning for judging. Please include a list of ingredients - **NOTHING CONTAINING NUTS PLEASE**, the name of the cake, baker's name and year group.

There has already been quite a response to the Bake Off announcement so competition will be fierce!

There will then be a Grand Cake Sale in aid of the Teenage Cancer Trust. This charity won the student vote with 47% of the votes. If students could bring small change (50p/£1 coins) all donations would be greatly appreciated.



## LUNCH MENU FOR NEXT WEEK: *(subject to any last-minute changes)*

The NEW Winter Menu for after half term will be released next week and will be found on [THIS PAGE](#) of our website.

	Monday	Tuesday	Wednesday	Thursday	Friday
<b>Main</b>	Garlic Crispy Chicken	A Variety Of Homemade Quiche	Spaghetti Bolognaise	Roast Of The Day	Chip Shop Day
<b>Vegetarian Main</b>	Garlic Crispy Quorn	A Variety Of Homemade Quiche	Veggie Spaghetti Bolognaise	Veggie Roast	Veggie Chip Shop Day
<b>Sides</b>	Savory Rice Seasonal Vegetables Salad	Herby Potatoes Homemade coleslaw Seasonal Vegetables	Garlic Bread Seasonal Vegetables Salad	Yorkshire Pudding Stuffing Seasonal Vegetables	Baked Beans Vegetables Curry Sauce Salad
<b>Street Food</b>	Variety of pizza slice	Chicken Burger	Chicken Fajitas	Falafel Pitta Pocket	Chips
<b>Dessert</b>	Vanilla Crunch Fresh Fruit	Cherry Cheesecake Fresh Fruit	Flapjack Fresh Fruit	Chocolate Sponge & Custard Fresh Fruit	Tray bakes and Donuts Fruit Fresh Fruit

## From the Local Authority

Special Educational Needs and Disability Information, Advice & Support Service

# sendiass

## SENDIASS sessions for parents and carers

Booking is open for our **Annual Reviews of Education, Health and Care (EHC) plans webinar**. This webinar was co-produced with parents and carers and **practitioners are also welcome to register**. The session includes explaining the purpose and process of an annual review and how parents and their children are involved.

4th November 2025 (6pm – 7.30pm)

[Register for session](#) (click for link)

Helpline: 01473 265210

Email: [enquiries@suffolksendiass.co.uk](mailto:enquiries@suffolksendiass.co.uk)

Text: ADVICE4ME to 87007

[Suffolk SENDIASS website](#)

## OCTOBER - What's On:

Friday 17th	Return of Lille Residential Trip
Saturday 18th	Duke of Edinburgh Navigation Walk
Tuesday 21st	Tea & Tour event (FULLY BOOKED)
Tuesday 21st	Year 9, 10 & 11 Flu Vaccinations
Wednesday 22nd	Tea & Tour event (FULLY BOOKED)
Thursday 23rd	School Bake Off
Monday 27th - Friday 31st	Half Term

