

# Course Booklet



The John Milton  
**Sixth Form**

AT STOWUPLAND HIGH SCHOOL

Church Road Stowupland Suffolk IP14 4BQ  
01449 674827 [sixthform@stowuplandhighschool.co.uk](mailto:sixthform@stowuplandhighschool.co.uk)



The John Milton  
**Sixth Form**

AT STOWUPLAND HIGH SCHOOL

# Introduction

### **1. Attend an open event**

The first step is to explore what opportunities are available to you; the best way to do this is to attend one of our open events to see first-hand what courses we offer and explore our facilities.

Once you've found the subjects you would like to study, we invite you to apply by accessing the application form on our website: [stowuplandhighschool.co.uk](http://stowuplandhighschool.co.uk)

Once we have received your application, you will be invited to an in-person or online discussion to explore your subject choices and answer any questions you may have.

Following your attendance to the arranged discussion, we will then either send you a conditional offer to study or help you to find an alternative choice, if we are unable to meet your request. Any conditional offer will be subject to meeting the entry requirements for your chosen courses.

After your GCSE exams in Year 11, you will be invited to spend some time in the sixth form, getting to know your subject teachers and finding out about the fantastic pastoral care and extra opportunities available to you, once you start. This is also a great time to meet other students and calm any anxieties you may have about starting your course.



**Director of 6th Form**

## Notes

[illegible]

## Extended Project Qualification

Extended Project Qualification (EPQ) is an A-level standard standalone qualification designed to extend and develop your abilities beyond the A-level syllabus and prepare for university or your future career.

The EPQ can be taken as an extension of other Level 3 qualifications or vocational qualifications, it's worth half an A-level (28 UCAS points) and is recognised by universities and employers. Many universities make lower A-level offers to students undertaking an EPQ.

The EPQ allows you to lead your own project. You get to plan and carry out research on a topic that you've chosen and isn't covered by your other qualifications. You can take inspiration from something touched on in class or something personal and unrelated to your studies. You then use this research to produce a written report and, in the case of practical projects, an artefact or a production.

By taking responsibility for the choice, design and decision making of an individual project (or an individual role in a group project) you could become a more critical, reflective and independent learner, develop your decision-making and problem-solving skills and increase your planning, research, analysis, synthesis, evaluation and presentation skills.

**Exam Board:** AQA course



**How will I be assessed:**

Combination of portfolio work and a presentation of your project

**Entry Requirements:** Grade 5 in English

## Applied Business Studies

**“Stopping advertising to save money is like stopping your watch to save time.” - Henry Ford**

The business world is constantly changing and evolving. With energy prices increasing, global supply issues and having to enhance corporate social responsibility, businesses are having to adapt.

Studying Business will provide students with an understanding of how businesses, large and small, can successfully deal with these challenges.

The course will cover how businesses are structured; developing a marketing campaign; Personal and Business Finance and the Recruitment and Selection Process. It is taught through case, project work, research assignments, class discussion and group activities. The aim, in all activities, is to develop a firm grasp of business principles by applying these to real-life studies where the emphasis is on research, decision-making and problem-solving. Independent learning is also an important feature on the course.

**Exam Board:** Pearson BTEC National course



**How will I be assessed:**

Combination of both portfolio work and external examinations

**Entry Requirements:** Grade 4 in English

# Applied Psychology

**Fascinated by the way people behave? Psychology will give you an insight to our actions and habits through scientific and social research.**

Psychology is the scientific study of human behaviour and experience. This stimulating subject combines fascinating content with a rigorous and scientific approach to investigation. It has recently undergone a huge growth in popularity. Psychology is used in all walks of life from marketing to political voting behaviour.

Our applied course allows students not only to explore the academic rigour of the approaches to psychology, looking at both the biological and social explanations, but also to explore the design of experiments and case studies of the criminal mind through portfolio work.

If you are interested in the human condition and how it can be explained, this is certainly the course for you.

**Exam Board:** Pearson BTEC National course



**How will I be assessed:**

Combination of external examination and portfolio work

**Entry Requirements:** Grade 4 in English

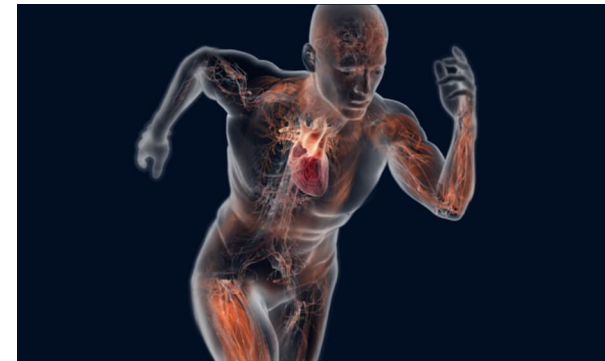
# Sport & Exercise Science

**A scientific study of sport and exercise for the game changers of tomorrow**

The world of Sports and Exercise Science encompasses anatomy and physiology, coaching, nutrition, biomechanics, contemporary research and the psychology of sport. Within this course you will not only stretch your scientific knowledge but also your understanding of the sports science industry itself. You will be required to undertake coaching and leadership roles within practical units, honing your leadership and communication skills along the way. Although it is not necessary to be a high performing sports person, having a passion for the science behind sport is key to you excelling in this course.

The course will prepare you for a career in the sports industry, teaching or any of the health professions. It is especially suited to those who have a love and talent for sport and would like to gain a qualification in it.

**Exam Board:** Pearson BTEC National course



**How will I be assessed:**

Combination of portfolio work and external examination

**Entry Requirements:** Merit in Level 2 Sport, Grade 5 in PE or Grade 5 in Biology

# Sociology

**“External social facts such as traditions, values, religions and laws affect the behaviour of those in society”**

**- Emile Durkheim**

If you are interested in the way society functions and why certain social groups act the way they do, this is the subject for you. You will learn about how families function and how the structure of the family has changed in line with gender roles and economic pressures. Alongside that, we consider the role of education in modern society and who it benefits; is it the students, the economy or society as a whole? We also look at how sociological research is conducted as well as the role and influence of the media. Finally we look at the causes of crime and how as a society we keep social order, which complements the Psychology courses module on criminal behaviour.

**Exam Board:** AQA A Level course



**How will I be assessed:**

100% examination 3 papers of equal weighting

**Entry Requirements:** Grade 5 in English Language or a Humanities Subject

# Applied Science

**“The important thing is to never stop questioning”  
- Albert Einstein**

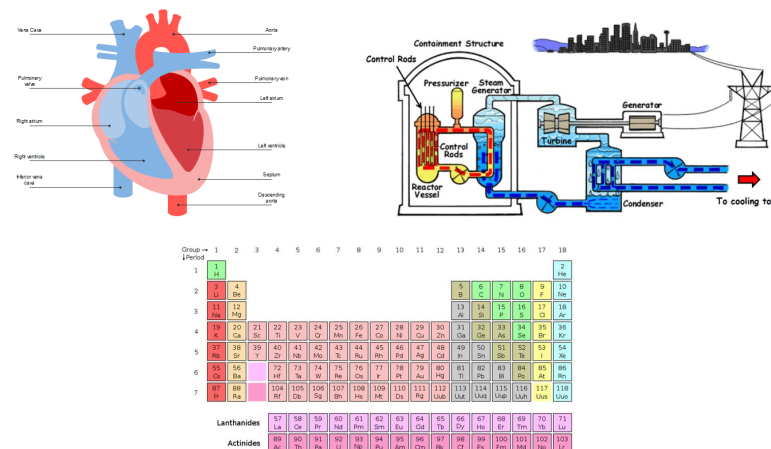
This course will be suitable for students who want to continue studying science as a Level 3 qualification and are thinking of careers in sport-related fields, the medical world including nursing, paramedics, radiotherapy and lab work, as well as primary school teaching.

It links well with subjects such as Health and Social Care and Sports Science.

Year 12 builds on GCSE concepts in Biology, Chemistry and Physics and includes a practical skills portfolio. There is also an exam on Science in the Modern World where we look at issues in science and how they are communicated

Year 13 units investigate topics such as Microbiology and the Human Body. These optional units can be tailored to suit interests and career aspirations within the group.

**Exam Board:** Pearson Level 3 Certificate course



**How will I be assessed:**

50% portfolio work and 50% external examination

**Entry Requirements:** Grade 4 in all Sciences



# Art and Design

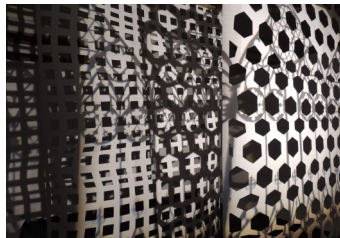
**It's not just about creativity, it is about the person you are becoming while you're creating.**

Studying Art will appeal to those of you who have an interest in creating and understanding Art and Design and the determination to develop that interest. This course presents you with exciting and challenging opportunities to learn much more about what it means to be a creative and imaginative individual.

We will help you broaden your knowledge and develop your skills to enable you to achieve your full potential within this rich and exciting subject. The course has been designed to ensure that you not only develop your practical skills and abilities, but also your ability to reflect on your own work and the work of others. The emphasis of coursework is on individual projects that promote personal interpretation and the development of individual style.

This A Level gives students the potential to progress to university on an art-related degree course, through a pre-degree Foundation Diploma in Art and Design. The course could also lead to a career in teaching, fashion, gallery/museum management, architecture, interior design, graphics, film and television design, jewellery design, theatre/set design and production, TV/film art directing or as an artist or art technician.

**Exam Board:** Pearson A Level course



**How will I be assessed:**

60% coursework : Incorporates three major elements: supporting studies, practical work, and a personal study. • Supporting studies and practical work will comprise a portfolio of development work and outcomes based on themes and ideas developed from personal starting points.

40% ESA : Incorporates two major elements: preparatory studies and the 15-hour period of sustained focus. • Preparatory studies will comprise a portfolio of practical and written development work based on the Externally Set Assignment.

**Entry Requirements:** Grade 5 in Art

# Product Design

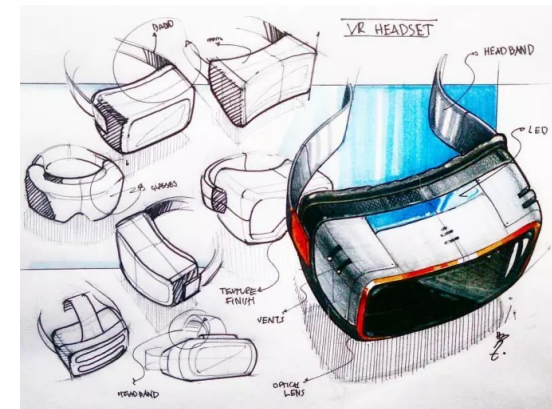
**The opportunity to embrace the ever-changing technology around us to make the world a better place.**

Product Design at A Level strengthens your critical thinking and problem solving skills within a creative environment—these are crucial skills that encompass everything humans do, and is very much transferrable to most other careers and professions.

Through design theory, research, analysis, idea generation and prototyping, we aim to solve real world problems, considering your own and others' aspirations and values. You will identify market needs and opportunities for new products, initiate and develop creative solutions, and Product Design will open up the world around you to develop your analytical brain.

Our aim is to help you challenge the 'norm' and to become that person who can look at the world and see opportunities to make it better place for everyone.

**Exam Board:** AQA A Level course



**How will I be assessed:**

50% NEA (coursework) and 50% external examination

**Entry Requirements:** Grade 5 in Design Technology & Mathematics

# Politics

**Power is at the heart of politics. If you want to understand who holds it and how they exercise it, this could be the course for you.**

Politics is essentially about how relationships between the people and those in charge are managed. Where does power lie, both nationally and globally? How are decisions made? Do we have a democracy? Are all humans treated the same globally, and if not why not? These questions make up the essence of the course coupled with the political philosophies of conservatism, liberalism, socialism and nationalism.

You will develop research and communication skills through a balanced handling of complex questions and an up-to-date knowledge of current affairs. You will develop your analytical skills by evaluating political concepts and arguments from competing and sometimes controversial perspectives. These are skills highly valued by Higher Education institutions and employers.

**Exam Board:** Pearson A Level course



**How will I be assessed:**

100% external examination

**Entry Requirements:** Grade 5 in English, History or Religious Studies

# Biology

**It is not the strongest of the species that survives, nor the most intelligent that survives but the one that is most adaptable to change.**

A Level Biology will give you an exciting insight into the contemporary world of biology. It covers the key concepts of Biology and the development of practical skills that are integrated throughout the course. Theoretical knowledge and the focus on current practical techniques will support your development as a future scientist. You will learn about the core concepts of Biology, many of which you will have encountered at GCSE, such as Cell Structure, Cell Cycle & Cancer, Homeostasis, Genetics, Photosynthesis and Respiration, but you will cover these in greater detail and have a wider understanding of how these key concepts link together to make the world around us.

**Exam Board:** AQA A Level course



**How will I be assessed:**

100% external assessment

Students also complete a practical endorsement in Biology that allows them to hone their practical skills in preparation for further study. The practical endorsement does not count towards the final grade, although you will be issued with a certificate to say you have reached the required standard.

**Entry Requirements:** Grade 5 in Biology

# Food Science & Nutrition

**Come and join the exciting and expanding field of Food Science and Nutrition.**

A course in Food Science and Nutrition offers a unique opportunity for you to develop your knowledge and extend your skills within nutrition in a vocational context. It will provide opportunities to develop your interdisciplinary skills, a range of key skills and your capacity for imaginative, innovative thinking, creativity and independence.

It is a suitable qualification for you if you want a broad background in this area and if you wish to progress to further education and those wanting to pursue careers or learning in related areas such as food industry production. The range of units available supports learners' progression from study at Level 2, and GCSE's in Food and Nutrition, Catering and Hospitality, Biology, Physical Education and Humanities. It will offer valuable preparation for entering the world of work and all the challenges and rewards that this brings. You will investigate and study Food Science and Nutrition in a variety of contexts. You will be given opportunities to acquire competence, capability and critical skills through the creation, implementation, use and evaluation of a range of resources. Students can develop their interest in, enjoyment of, and critical reflection about the world of Food Science and Nutrition.

**Exam Board:** WJEC Level 3 Certificate



**How will I be assessed:**

Combination of both portfolio work and external examinations

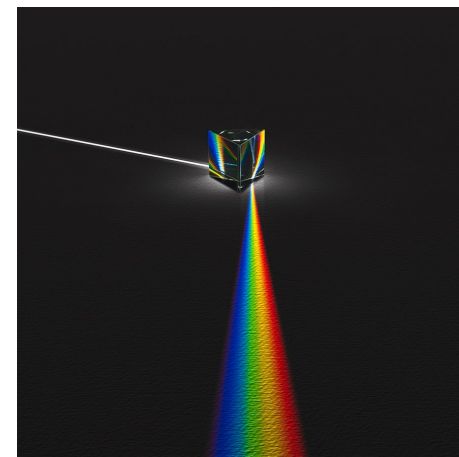
**Entry Requirements:** Level 2 Pass in Hospitality & Catering or Grade 5 in Nutrition, Grade 5 in English & Science

# Physics

**Look up at the stars and not down at your feet. Try to make sense of what you see, and wonder about what makes the universe exist. Be curious.**

You will already be familiar with many of the topics that you will study, including forces, waves, radioactivity, electricity and magnetism. At A Level, you will look at these areas in more detail and find out how they are interconnected. You will also learn how to apply maths to real-world problems and explore new areas such as particle physics, cosmology and medical physics. Perhaps more importantly, you will develop skills that can be transferred to just about any other area of work, from setting up a business to saving the planet. Even if you do not go on to become a physicist, learning to think like one will help you get to the root of any problem and draw connections that aren't obvious to others. Physics won't give you all the answers, but it will teach you how to ask the right questions. This is an A Level course.

**Exam Board:** OCR A Level course



**How will I be assessed:**

100% external assessment

Students also complete a practical endorsement in Physics that allows them to hone their practical skills in preparation for further study. The practical endorsement does not count towards the final grade, although you will be issued with a certificate to say you have reached the required standard.

**Entry Requirements:** Grade 5 in Physics



# Philosophy

**“The point of philosophy is to start with something so simple as not to seem worth stating, and to end with something so paradoxical that no-one will believe it”.**

***Bertrand Russell***

The specification has been designed to introduce students to the key methods and concepts in Philosophy of Religion through a study of three broad themes:

- Philosophy of religion
- Religion and ethics
- Developments in Christian thought

Students will develop and refine a range of transferable skills, such as the ability to ask penetrating questions, to analyse and evaluate the arguments of others and to present their own arguments clearly and logically.

**Exam Board:** OCR A Level course



**How will I be assessed:**

100% external examination

**Entry Requirements:** Grade 5 in Religious Studies, History or English

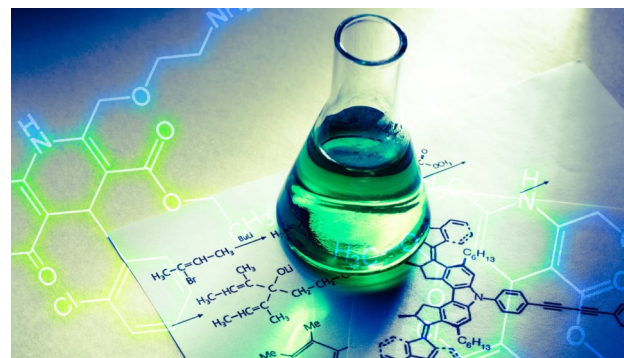
# Chemistry

**Learning how the world around us works at an atomic level.**

Learning about how matter interacts is fundamental to understanding how the world around you works. Materials and their properties are the foundation of our economy and way of life. Having a knowledge of these will help you go on to make more informed choices in life. Chemistry is a study in the patterns of behaviour of elements and compounds; the very building blocks of life. If you have ever wondered why substances look or behave in a particular way then Chemistry is for you.

A Level Chemistry is demanding and rewarding in equal measure. It is regarded as a challenging academic subject and as such is often looked for by universities and employers beyond the realm of science. Students of this science discipline have excellent numeracy skills, the ability to follow the scientific method and can apply knowledge to a wide range of problems. These are highly prized in future careers.

**Exam Board:** Pearson A Level course



**How will I be assessed:**

100% external assessment

Students also complete a practical endorsement in Chemistry that allows them to hone their practical skills in preparation for further study. The practical endorsement does not count towards the final grade, although you will be issued with a certificate to say you have reached the required standard.

**Entry Requirements:** Grade 5 in Chemistry

# Computer Science

**AI, Games Design, Web Developer, Coding: these are the essentials for modern life.**

Computer Science A Level is a practical subject where students can apply the academic principles learned in the classroom to real-world systems. It is an intensely creative subject that combines invention and excitement, and can look at the natural world through a digital prism.

An A Level in Computer Science will value computational thinking, helping learners to develop the skills to solve problems, design systems and understand the power and limits of human and machine intelligence. Learners will develop an ability to analyse, critically evaluate and make decisions.

Computer Science can lead to a huge variety of career options such as game design, cyber security, digital marketing and future technologies. While a GCSE in Computer Science is not essential, strong mathematical skills will help with different areas of the course.

**Exam Board:** OCR A Level course



**How will I be assessed:**

80% external examination (2 exams)  
20% programming coursework assignment

**Entry Requirements:** Grade 5 in Computer Science or ICT or Mathematics

# Music Technology

**Music has been changing and developing for thousands of years. Each time society changes, so does music.**

The content of this qualification has been developed in consultation with employers and professional bodies to ensure that it is appropriate for those interested in working in the sector. In addition, higher education representatives have been involved to ensure that the qualification fully supports entry to the relevant range of specialist degrees.

There are two mandatory units, which cover the following aspects of digital music production:

- music and sound for media
- digital audio workstation (DAW) production

Learners will be able to add three optional units, from a choice of four, to the mandatory content. These have been designed to support their progression to a range of employment opportunities in digital music production, and to a range of Higher Education courses. Optional units introduce learners to specialist areas of their choice, including working in particular environments, and linking with relevant technical roles. The optional units cover areas such as:

- creative synthesis and sampling
- remixing and reworking
- mixing and mastering techniques
- commercial music production

While taking this qualification, learners will be required to engage with sector employers, where they will be given opportunities to develop practical skills in preparation for employment.

**Exam Board:** Pearson BTEC National course



**How will I be assessed:**

Combination of both portfolio work and external examinations

**Entry Requirements:** Merit in Level 2 Music or ability to play an instrument plus an interview

# Media Studies

**“Whoever controls the media, controls the mind”**  
**Jim Morrison**

You are already an extremely experienced and perceptive reader and consumer of media. Everyone is immersed in different forms of media almost 24/7 every day: advertising, social media, TV and film, music videos and radio. The AQA Media Studies A Level will allow you to develop the skills needed to analyse the ways different media forms and texts are created by producers and understood by audiences. There are four main frameworks to consider: media language and representation, media audiences and industries. Through a detailed study of 17 close-study products from a wide range of media forms, you will consider the many ways the media persuades and entertains. Current close study products include the TV series ‘The Responder’, The Sephora ‘Black Beauty is Beauty’ campaign, the magazine ‘GQ’ the music video for Lil Nas X’s ‘Old Town Road’ and the video game ‘The Sims Freeplay’.

Media production work is also a very significant part of the course, allowing you to apply the knowledge you have learnt whilst studying the close-study products as you create your own original media texts from a choice of 6 briefs. This combination of production and exam units requires you to develop a very wide range of skills through the course including time management, creativity, media technical skills as well as written analysis and evaluation.

**Exam Board:** AQA A Level course



**How will I be assessed:**

70% external examination

30% NEA (creating one cross-media product from a choice of 6 briefs)

**Entry Requirements:** Grade 4 in English

# Core Mathematics

**If you want to continue to develop your maths skills to help your other A-level courses by looking at real world problems, then this is the course for you.**

Core Maths has been designed to maintain and develop real-life maths skills. What you study is not purely theoretical or abstract; it can be applied on a day-to-day basis in work, study or life and most courses will include a financial maths element. Core maths will help you to learn to interpret and communicate the use of maths in everyday life in problem solving situations, which is required in A Level subjects - including the sciences, geography, business studies, psychology and economics.

This qualification provides the mathematical skills for students progressing to higher education to study subjects that ‘use’ mathematics including biology, business, geography, health and social care, nursing and psychology. Students planning to study more mathematically-based subjects including statistics and physics, will find that A Level mathematics is likely to be a requirement.

The skills developed in the study of mathematics are increasingly important in the workplace and in higher education; studying Core Maths will help you keep up these essential skills. Most students who study Maths after GCSE improve their career choices and increase their earning potential. This course is designed for students who achieved a score of 4 or higher at GCSE.

The mathematical content will be taken from the following areas:

Number & Measures

Financial Maths

Estimation

Algebra & Graphs

Statistics and Analysis

Probability

The content will be approximately 80% of the current Higher GCSE and at least 20% additional Level 3 content.

**Exam Board:** Pearson A Level course

**How will I be assessed:**

100% external examination

**Entry Requirements:** Grade 5 in Mathematics





# Criminology

Criminology is the scientific study of crime. In this course you will learn why people commit crime, the different types of crimes people commit, and why some crimes go unreported. You will also gain an understanding of the criminal justice system, and what happens from the moment a crime has been identified, to when a verdict is reached. Furthermore, you will learn to evaluate the effectiveness of social control measures and criminal justice policy.

This course will enable you to develop a range of transferable skills which are desirable within the police service, probation, prison service, social services, and by Universities for those wishing to pursue Higher Education. This includes campaigning skills, researching skills, problem solving, presenting, and the ability to work alongside others.

**Exam Board:** Eduqas (Level 3 Diploma, equivalent to A level)



## How will I be assessed:

50% external examinations (2 exams - 1 per year)

50% controlled assignments (2 assignments - 1 per year)

**Entry Requirements:** Grade 5 in English

# Mathematics

**If you thrive on the challenge of problem solving and seek to find clarity and reason, this is the subject for you.**

During the course you will study both Pure and Applied Mathematics as students build on the knowledge from their GCSEs. You will develop the essential skills required to study and understand abstract ideas in varying contexts. The statistical elements of the course will give you the ability to analyse and interpret data in a real world context, whilst the mechanics will focus on the laws of motion and forces.

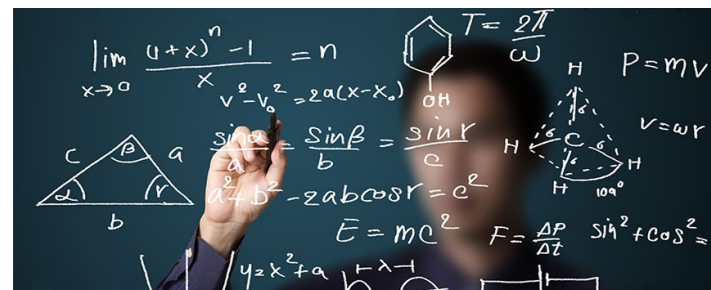
The natural regard that we all have for pattern, logic, reasoning and proof is formalised within Mathematics.

The application of Mathematics is a key component of other A Levels, including the mechanical element in Physics and the statistical requirements in Psychology or Geography.

Mathematics A Level is a key qualification for anyone who wishes to study Mathematics, Science or Engineering at University

Mathematics is a good subject to develop a problem-solving approach using a range of logical methods.

**Exam Board:** Pearson A Level course



## How will I be assessed:

100% external examination

**Entry Requirements:** Grade 7 in Mathematics (higher paper)



# Information Technology

**“Information technology and business are becoming inextricably interwoven. I don’t think anybody can talk meaningfully about one without talking about the other.”  
(Bill Gates)**

The objective of this BTEC Level 3 qualification is to give learners the opportunity to develop their knowledge and skills in IT systems, systems management and social media in business. This will enable learners to progress to further study in the IT sector or other sectors.

Learners will develop a common core of IT knowledge and study areas such as the relationship between hardware and software that form an IT system, managing and processing data to support business and using IT to communicate and share information.

The qualification, when studied with other Level 3 qualifications, is aimed at progression to higher education but also enables learners to develop knowledge and skills needed for entry-level roles related to IT. These include vocational apprenticeship roles and trainee/entry-level roles such as a social media specialist, web/content developer, or business analyst.

This qualification is designed for learners who are interested in an introduction to the study of creating IT systems to manage and share information, alongside other fields of study, with a view to progressing to a wide range of higher education courses, not necessarily in IT.

Computer Science can lead to a huge variety of career options such as game design, cyber security, digital marketing and future technologies. While a GCSE in Computer Science is not essential, strong mathematical skills will help with different areas of the course.

**Exam Board:** Pearson BTEC National course



## How will I be assessed:

- 58% external examination (2 exams)
- 42% coursework (2 assignments)

**Entry Requirements:** Grade 5 in Information Technology or Mathematics

# Dance

**The true gift of dance - to move, to touch, to inspire.**

A level Dance is a dynamic qualification which encourages students to develop their creative and intellectual capacity, alongside transferable skills such as working in a team, communication and problem solving. All of these skills are sought after by higher education establishments and employers and will help students stand out in the workplace whatever their choice of career.

This specification reflects both historical and current dance practises, making it more relevant, and inspires a lifelong passion and appreciation for dance.

**Exam Course:** BTEC Level 3 National Extended Certificate in Performance (Dance)



## How will I be assessed:

- 5 Units to study
- Group performance workshop
- Developing technical skills for performance
- External task
- Plus optional dance based units eg jazz, tap, healthy dancer, choreography, improvisation (and others)

**Entry Requirements:** Grade 5 in Dance if taken, otherwise interview required

# Drama

***“Without wonder and insight, acting is just a business. With it, it becomes creation.”***  
**- Bette Davis**

This course is not only for those who wish to be on the stage, but also those who wish to take on a backstage role in Costume, Set, Lighting or Sound Design. The theatre is a magical place where the human condition is conveyed in the most creative way. This A Level allows you to express yourself and explore your craft.

The course aims to introduce you to a range of practitioners and playwrights; exploring their work both practically and analytically. Students get the opportunity to respond to selected texts from the perspective of an actor, director and designer. As well as studying set texts and practitioners and analysing live theatre, you will also take part in a group devised and group scripted performance.

**Exam Board:** AQA A Level course



**How will I be assessed:**

- 40% practical
- 20% coursework
- 40% external examination

**Entry Requirements:** Grade 5 in Drama

# History

***“Professor Johnston often said that if you didn't know history, you didn't know anything. You were a leaf that didn't know it was part of a tree.”***  
**Michael Crichton, *Timeline***

The course covers:

- Stuart Britain & the Crisis of Monarchy 1603-1702
- The American Dream: Reality & Illusion 1945-1980
- Historical investigation: a personal study based on Russia 1856-1964.

During the course you will learn the significance of events, individuals, and compare how and why societies have changed over time.

The course will help to develop your understanding of the language historians use and to understand the nature of historical evidence and the methods used by historians to analyse and evaluate it.

**Exam Board:** AQA A Level course



**How will I be assessed:**

80% external examination—2 exam papers worth 40% each

A 3500-4500 word historical investigation; this non-examined assessment (NEA) is worth 20% of the final A Level qualification

**Entry Requirements:** Grade 5 in History

# Health & Social Care

**Health is the bedrock of a society; without it everything fails.**

Health and Social Care can be taken as a single option (equivalent to one A Level) or as a double option (equivalent to two A Levels).

The course covers a wide range of topics including: sexual health and reproduction; building positive relationships; equality, diversity and rights; anatomy and physiology and nutrition. All of these topics are valued by health and social care professionals and are an excellent starting point for anyone thinking of a caring profession including social care, nursing, midwifery or working within education.

The course is based on portfolio work as well as external examinations and enhances your organisational skills, research and deeper learning as well as your levels of communication and interpersonal skills.

**Exam Board:** OCR Cambridge Technical course



## How will I be assessed:

Combination of both portfolio work and external examination

**Entry Requirements:** Merit in Level 2 Health & Social Care, Grade 5 in English or Grade 5 Biology

# English Language

**“The limits of my language mean the limits of my world”  
Ludwig Wittgenstein**

English Language at A Level is very different to English Language at GCSE. At A Level you will study the way that language and communication underpin so many aspects of human society. You will study a very wide range of topics related to language including; possible gender differences; how and why language changes over time; how babies and children learn to speak and, later to read and write; and how language is used and adapted in different, real world contexts such as the workplace. You will learn how to analyse written and spoken language using a more rigorous linguistic framework and consider how language is used to represent people, places and ideas.

**Exam Board:** AQA A Level course



## How will I be assessed:

80% - 2 exams—'Language, the Individual and Society' and 'Language Diversity and Change.'

20% - NEA comprising a language investigation project and original writing and a commentary on the writing process.

**Entry Requirements:** Grade 5 in English Language



# English Literature

**“A reader lives a thousand lives before he dies; the man who never reads, lives only one” - George R.R. Martin**

If you enjoy reading, discussing and analysing a range of different books, poems and plays written by authors both modern and from previous centuries, A Level English Literature will prove to be a course to inspire your passion for reading further. Discussion and debate is at the heart of the A Level reading experience and this is a focus for our lessons. You will also develop your ability to express your ideas in writing, considering how to evaluate and analyse texts by constructing a well-argued essay.

During the course you will consider the importance of literary genres and how social and historical contexts influence how texts are written and read. Current texts you study, such as 'The Kite Runner', 'Othello' and 'The Handmaid's Tale,' encourage you to consider how they present a range of contentious issues surrounding gender, race and class.

The non-examined assessment unit will provide the opportunity to consider different theories and approaches to reading and interpreting literature including how wider ideas in society such as feminism might influence the way we understand texts. You may choose one of your texts for this NEA unit yourself, allowing you to pursue your own reading interests.

**Exam Board:** AQA A Level course



**How will I be assessed:**

80% 2 external examinations on 'Aspects of Tragedy' and 'Elements of Social and Political Protest Writing.'

20% NEA (2 essays of 1250-1500 words each)

**Entry Requirements:** Grade 5 in English Literature

# Geography

**In a changing world nothing changes more than geography.**

During the A Level Geography course you will:

- Look at the issues of natural hazards and globalization at different scales and explore how your life interacts with these challenges;
- Engage with issues that are affecting our planet, where there are increasing demands on diminishing resources and conflicts over their use and conservation;
- Consider economic development, and how to make our current patterns of consumption more sustainable - is technological development the answer to our problems of resource depletion?
- Develop graphical skills to interpret maps, graphs, tables of data, photos, cartoons, diagrams and making presentations;
- Collect data as part of field work and develop research skills.
- 

**Exam Board:** Pearson A Level course



**How will I be assessed:**

There are three written examinations worth 80% of the final mark

Non-examination assessment: independent investigation worth 20% of the final mark

**Entry Requirements:** Grade 5 in Geography



# Further Mathematics

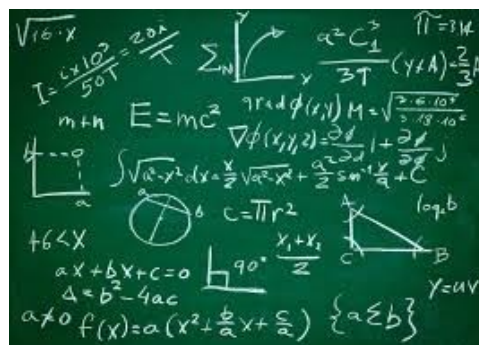
**If you thrive on the challenge of problem solving and seek to extend your reasoning skills, this is the subject for you.**

A Level Further Mathematics is a separate A Level that can only be taken in addition to taking A Level Mathematics. Half of the content of this will be Pure Mathematics and the remainder will be from options such as Mechanics, Statistics, Decision Mathematics and Further Pure. The choice of these options will often depend on the group but currently we study Decision Mathematics.

Students taking Further Mathematics overwhelmingly find it to be an enjoyable, rewarding, stimulating and empowering experience. It is a challenging qualification, which both extends and deepens your knowledge and understanding beyond the standard A Level Mathematics. Students who do it often say it is their favourite subject. For someone who enjoys mathematics, it provides a challenge and a change to explore new and/or more sophisticated mathematical concepts. As well as learning new areas of Pure Mathematics you will study further applications of mathematics in two of the three options: Mechanics, Statistics and Decision Mathematics.

Students who take Further Mathematics find the additional time spent studying mathematics boosts their marks in single A Level Mathematics. Studying Further Mathematics consolidates and reinforces your standard A Level Mathematics.

**Exam Board:** Pearson A Level course



**How will I be assessed:**

100% external examination

**Entry Requirements:** Grade 8 in Mathematics

# French

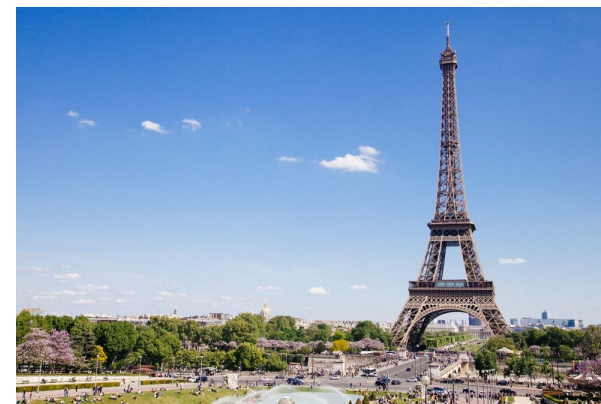
**“A different language is a different vision of life”**

Students study technological and social change, looking at diversity and the benefits it brings. They will study highlights of French-speaking artistic culture, including francophone music and cinema, and learn about political engagement and who wields political power in the French-speaking world.

Students also explore the influence of the past on present-day French-speaking communities. Throughout their studies, they will learn the language in the context of French-speaking countries and the issues and influences which have shaped them. Students will study texts and film and have the opportunity to carry out independent research on an area of their choice.

Assessment tasks will be varied and cover listening, speaking, reading and writing skills.

**Exam Board:** AQA A Level course



**How will I be assessed:**

100% external examination

- Listening, reading and writing 45%
- Writing 25%
- Speaking 30%

**Entry Requirements:** Grade 5 in French