

Health and Social Care

Unit 13 Sexual health, reproduction and early development stages

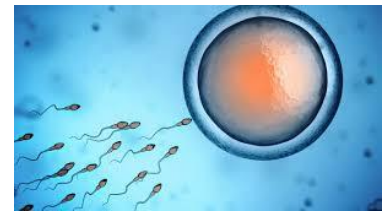
We ask you to complete some independent study and research after your GCSEs in preparation for starting the course in September. All the tasks will feed in to tasks we will complete in the first half term of your Sixth Form study.

Sexual Health Services

What sexual health services are available locally? Research what support is available in the towns near you – opening times, accessibility, support on offer, cost.

Conception

Research the stages of conception and create a powerpoint which goes through the process in detail from ovulation to fertilisation.



Relationships and Sex Education in school

What have you learnt over the years in RSE in school?

How effective has yours been? – from primary to now

Research what changes have been brought in over the last few years?

How could RSE continue to be improved? – in your school? across the country?

Write a letter to your MP expressing your views and asking for change.



Careers in Health and Social Care

There are 350 different careers available and 70 different professions. Health and Care is the second largest employment sector in Suffolk, employing 38,750 people.

What different careers could you pursue in the health and social care sector. Research to find out about some and create a fact file of opportunities.

